

XG822 FL Excavator parameters

Basic parameters

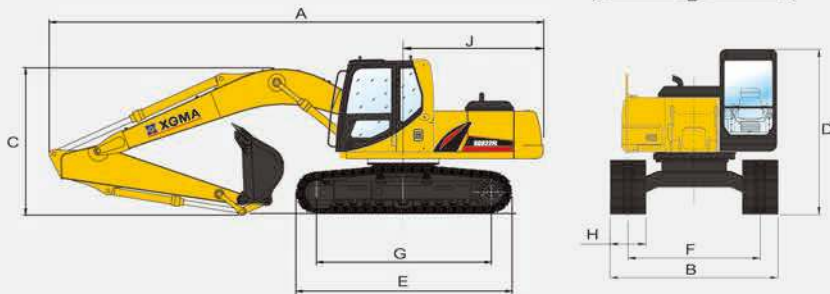
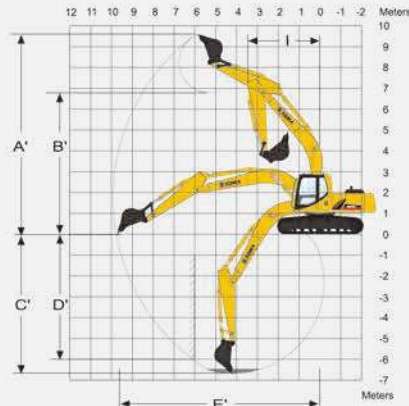
Standard bucket capacity	0.91m ³
Working mass	21.5T
Engine model	GH-4HK1XKSC-02
Rated power/rated speed (net)	133/2000KW/(r/min)
Swing speed	11r/min
Travel speed (high/low)	5.0/3.0km/h
Ground pressure	43Kpa
Gradeability	35° /70%
Digging force (arm/bucket)	107.5/150kN

Outline dimension

A	Full length upon transport	9580mm
B	Full width upon transport	2990mm
C	Full height upon transport	2990mm
D	Cab height	2990mm
E	Full length of crawler	4460mm
F	Crawler gauge	2390mm
G	Wheel track	3675mm
H	Track shoe width	600mm
I	Minimum front-end swing radius	3560mm
J	Rear-end swing radius	2790mm

Working range

A'	Maximum digging height	9600mm
B'	Maximum unloading height	6800mm
C'	Maximum digging depth	6640mm
D'	Maximum vertical digging depth	6320mm
E'	Maximum digging radius	9930mm



XGMA

**XGMA Technology
Intelligence Era**

XG822 FL
Hydraulic excavator



XGMA

XIAMEN XGMA MACHINERY CO., LTD.

Tel.: +86-592-2360090 Fax: +86-592-5822329

E-mail: marketing@xiagong.com www.xgma.com.cn/en/

Add: No.668 Guankou Souht Road, Jimei District, Xiamen, 361023, China

All pictures and data are only for reference.All information is subject to change without prior notice.

XIAMEN XGMA MACHINERY CO.,LTD.

XG822 FL

Crawler hydraulic excavator

Main application conditions:

Suitable for trenching, filling, loading, slope refurbishing, subgrade slope leveling surface, riverbed or ditch removal, port logistics, hoisting, quarry, mine exploitation, etc.

New configuration, stable performance

10~20%



New-generation main valve is used to optimize pressure loss and engine speed control design, improving the working efficiency by 10~20%.



New-generation energy saving and environmental EFI engine which meets Euro III emission standard and reduces fuel consumption by 10~16%.

Powerful digging force

Maximum digging force (arm/bucket) **107.5/150kN**

Compared with E Series **10%**

Powerful traction, excellent gradeability

Maximum traction **198kN**

Travel speed **5.0(Height)/3.0(Low speed)km/h**

The pressure of hydraulic system is improved for professional response to pan soil work.



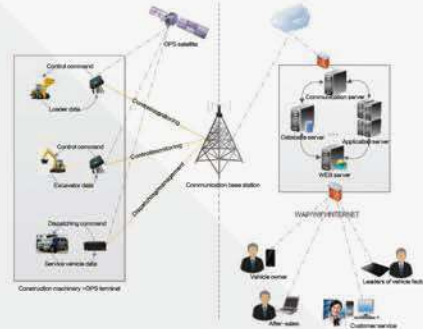
Operation harmony

System pressure **34.3Mpa** Digging force

The negative flow feedback system matches with the advanced ECU controller via CAN bus, ensuring that the pump provides flow according to work needs; the system pressure, pressure boost and secondary protection pressure are improved by 9.3%, 8.8%, 8% respectively.

XGMA intelligent cloud, remote intelligent control

- Support remote management and real-time feedback of dynamic data, achieve remote diagnosis, support APP management and keep control of excavator work trace and status.
- Provide the customer with maintenance reminder and excavator work analysis, and establish management by groups.
- Be compatible with other models, and provide the customer with management solution of excavator system.



Reinforced structure, reliable and endurable

Robust external structures greatly increases the use value of the excavator

- The reinforced work device improves the service life, achieving professional response to high-intensity work.
- The reinforced undercarriage X frame ensures that the internal stress upon E series at the same position is reduced by 11%.
- The firm chassis and the reinforced guide mechanism are not prone to deformation, which, together with drive wheel, guide wheel, track roller, riding wheel and crawler of famous brands, guarantees the service life of travel device, and the lengthened and widen undercarriage makes the excavator work more stably.

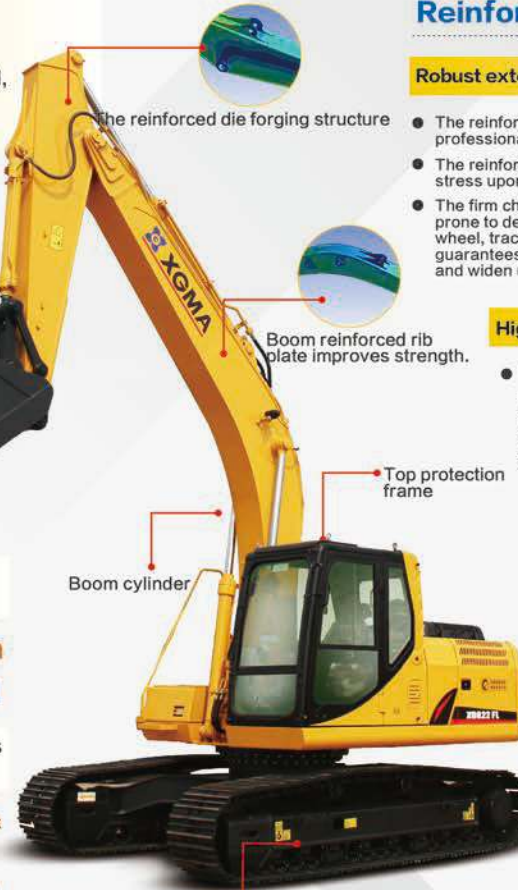


High-efficient and high-capacity radiator

- The high-efficient and high-capacity radiator is of tandem pattern, which improves cooling performance, ensures PTO reliability and endures continuous operation.
- Engine coolant temperature is reduced by **4.5%**
- Hydraulic oil temperature is reduced by **6.5%**

Economical maintenance, comfortable operation

- The centralized arrangement of daily maintenance components achieves easy operation and low maintenance cost.
- Three-level emission engine structure is compact, increasing maintenance space.
- The tandem arrangement of radiator facilitates cleaning.



Increase the rotating force, reduce the digging period

Swing speed **11r/Min**
Compared with the previous version, swing torque is additionally provided with: **12%**

The enlarged fuel tank features longer driving mileage

The large capacity of fuel tank is enlarged by 8.6%, achieving long-time operation, maximizing the extension of driving time.

Fuel tank of high capacity
Driving time

Travel device can be adaptive to various adverse conditions, firm and endurable.

- The cab is applied with the frame structure which prevents falling objects. The noise at driver's seat is 75dB only, very comfortable.
- The frame structure is mounted by its dead weight, and the appearance parts are firm.
- The air floating seat is comfortable for driving.
- The emergency stop switch is provided to avoid fire or any danger in case of emergency.
- The human-oriented arrangement of throttle, control switch, etc.
- 7" color display increases more display functions.
- Outdoor observation timer facilitates the machine-team lease timing.
- The infrared rearview camera is optional.

